

**DN6000415**

**Model 5200 DAC Expansion Unit**

**Acroamatics, Inc.**  
**[www.acroamatics.com](http://www.acroamatics.com)**

**August 20, 2007**

**PROPRIETARY NOTICE**

Information contained in this document is disclosed in confidence and may not be duplicated in full or in part by any person without prior written approval by Acroamatics, Inc., except as provided by separate contractual agreement. Its sole purpose is to provide the user with adequately detailed documentation in order to install, operate, maintain, and order spare parts for the equipment supplied. The use of this document for any other purpose is expressly prohibited.

**ACROAMATICS DOCUMENT HISTORY**

The following table indicates major changes made to Model 5200 DAC Expansion Unit, Acroamatics Document Number DN 6000415, released on August 20, 2007 and contains a record of all revisions made since that date.

| <b>DN 6000415 CHANGE HISTORY</b> |             |                |             |
|----------------------------------|-------------|----------------|-------------|
| <b>Rev</b>                       | <b>Date</b> | <b>Action</b>  | <b>Name</b> |
|                                  | 08-20-07    | Original Issue | BB          |

## Table of Contents

|                                    |    |
|------------------------------------|----|
| Model 5200 DAC Expansion Unit..... | 3  |
| Section 1 Introduction .....       | 3  |
| Section 2 Connections .....        | 4  |
| Section 3 Drawings .....           | 17 |

## **Model 5200 DAC Expansion Unit**

### **Section 1 Introduction**

The Model 5200 DAC Expansion Unit installs in a standard 19-inch rack, and is used to provide BNC and D-SUB connections for Acroamatics Model 482M Analog Processor Mezzanine. See Acroamatics document 6000368 for more information on Acroamatics Model 482M

## Section 2 Connections

The following pages contain tables of information on all the connections into and out of the Model 5200 unit.

| <b>TABLE 2-1 FRONT PANEL MATING CONNECTOR LIST<br/>FOR MODEL 5200 3300224</b> |                 |                             |
|---|-----------------|-----------------------------|
| <b>CONN</b>   | <b>FUNCTION</b> | <b>MATING<br/>CONNECTOR</b> |
| P01   | ANALOG INPUT 00 | BNC                         |
| P02   | ANALOG INPUT 01 | BNC                         |
| P03   | ANALOG INPUT 02 | BNC                         |
| P04   | ANALOG INPUT 03 | BNC                         |
| P05   | ANALOG INPUT 04 | BNC                         |
| P06   | ANALOG INPUT 05 | BNC                         |
| P07   | ANALOG INPUT 06 | BNC                         |
| P08   | ANALOG INPUT 07 | BNC                         |
| P09   | ANALOG INPUT 08 | BNC                         |
| P10   | ANALOG INPUT 09 | BNC                         |
| P11   | ANALOG INPUT 10 | BNC                         |
| P12   | ANALOG INPUT 11 | BNC                         |
| P13   | ANALOG INPUT 12 | BNC                         |
| P14   | ANALOG INPUT 13 | BNC                         |
| P15   | ANALOG INPUT 14 | BNC                         |
| P16   | ANALOG INPUT 15 | BNC                         |
| P17   | DTOA OUTPUT 00  | BNC                         |
| P18   | DTOA OUTPUT 01  | BNC                         |
| P19   | DTOA OUTPUT 02  | BNC                         |
| P20   | DTOA OUTPUT 03  | BNC                         |
| P21   | DTOA OUTPUT 04  | BNC                         |
| P22   | DTOA OUTPUT 05  | BNC                         |
| P23   | DTOA OUTPUT 06  | BNC                         |
| P24   | DTOA OUTPUT 07  | BNC                         |
| P25   | DTOA OUTPUT 08  | BNC                         |
| P26   | DTOA OUTPUT 09  | BNC                         |

| <b>TABLE 2-1(cont.) FRONT PANEL MATING CONNECTOR LIST<br/>FOR MODEL 5200 3300224</b> |                     |                         |
|--|---------------------|-------------------------|
| <b>CONN</b>  | <b>FUNCTION</b>     | <b>MATING CONNECTOR</b> |
| P27  | DTOA OUTPUT 10      | BNC                     |
| P28  | DTOA OUTPUT 11      | BNC                     |
| P29  | DTOA OUTPUT 12      | BNC                     |
| P30  | DTOA OUTPUT 13      | BNC                     |
| P31  | DTOA OUTPUT 14      | BNC                     |
| P32  | DTOA OUTPUT 15      | BNC                     |
| P33  | DTOA OUTPUT 16      | BNC                     |
| P34  | DTOA OUTPUT 17      | BNC                     |
| P35  | DTOA OUTPUT 18      | BNC                     |
| P36  | DTOA OUTPUT 19      | BNC                     |
| P37  | DTOA OUTPUT 20      | BNC                     |
| P38  | DTOA OUTPUT 21      | BNC                     |
| P39  | DTOA OUTPUT 22      | BNC                     |
| P40  | DTOA OUTPUT 23      | BNC                     |
| P41  | DTOA OUTPUT 24      | BNC                     |
| P42  | DTOA OUTPUT 25      | BNC                     |
| P43  | DTOA OUTPUT 26      | BNC                     |
| P44  | DTOA OUTPUT 27      | BNC                     |
| P45  | DTOA OUTPUT 28      | BNC                     |
| P46  | DTOA OUTPUT 29      | BNC                     |
| P47  | DTOA OUTPUT 30      | BNC                     |
| P48  | DTOA OUTPUT 31      | BNC                     |
| P49  | DISC LINE 00-15 OUT | D-SUB 25P               |
| P50  | DISC LINE 16-31 OUT | D-SUB 25P               |

| <b>TABLE 2-2.<br/>MODEL 5200 FRONT CHASSIS PANEL<br/>CONNECTOR J01<br/>ANALOG INPUT 00</b> |               |                 |
|--|---------------|-----------------|
| <b>PIN</b>   | <b>SIGNAL</b> | <b>FUNCTION</b> |
| 01   | 4INPA00       | Analog input 00 |
| 02   | GND           | Ground          |

| <b>TABLE 2-3.<br/>MODEL 5200 FRONT CHASSIS PANEL<br/>CONNECTOR J02<br/>ANALOG INPUT 01</b> |               |                 |
|--|---------------|-----------------|
| <b>PIN</b>   | <b>SIGNAL</b> | <b>FUNCTION</b> |
| 01   | 4INPA01       | Analog input 01 |
| 02   | GND           | Ground          |

| <b>TABLE 2-4.<br/>MODEL 5200 FRONT CHASSIS PANEL<br/>CONNECTOR J03<br/>ANALOG INPUT 02</b> |               |                 |
|--|---------------|-----------------|
| <b>PIN</b>   | <b>SIGNAL</b> | <b>FUNCTION</b> |
| 01   | 4INPA02       | Analog input 02 |
| 02   | GND           | Ground          |

| <b>TABLE 2-5.<br/>MODEL 5200 FRONT CHASSIS PANEL<br/>CONNECTOR J04<br/>ANALOG INPUT 03</b> |               |                 |
|--|---------------|-----------------|
| <b>PIN</b>   | <b>SIGNAL</b> | <b>FUNCTION</b> |
| 01   | 4INPA03       | Analog input 03 |
| 02   | GND           | Ground          |

| <b>TABLE 2-6.<br/>MODEL 5200 FRONT CHASSIS PANEL<br/>CONNECTOR J05<br/>ANALOG INPUT 04</b> |               |                 |
|--|---------------|-----------------|
| <b>PIN</b>   | <b>SIGNAL</b> | <b>FUNCTION</b> |
| 01   | 4INPA04       | Analog input 04 |
| 02   | GND           | Ground          |

| <b>TABLE 2-7.<br/>MODEL 5200 FRONT CHASSIS PANEL<br/>CONNECTOR J06<br/>ANALOG INPUT 05</b> |               |                 |
|--|---------------|-----------------|
| <b>PIN</b>   | <b>SIGNAL</b> | <b>FUNCTION</b> |
| 01   | 4INPA05       | Analog input 05 |
| 02   | GND           | Ground          |

| <b>TABLE 2-8.<br/>MODEL 5200 FRONT CHASSIS PANEL<br/>CONNECTOR J07<br/>ANALOG INPUT 06</b> |               |                 |
|--|---------------|-----------------|
| <b>PIN</b>   | <b>SIGNAL</b> | <b>FUNCTION</b> |
| 01   | 4INPA06       | Analog input 06 |
| 02   | GND           | Ground          |

| <b>TABLE 2-9.<br/>MODEL 5200 FRONT CHASSIS PANEL<br/>CONNECTOR J08<br/>ANALOG INPUT 07</b> |               |                 |
|--|---------------|-----------------|
| <b>PIN</b>   | <b>SIGNAL</b> | <b>FUNCTION</b> |
| 01   | 4INPA07       | Analog input 07 |
| 02   | GND           | Ground          |

| <b>TABLE 2-10.<br/>MODEL 5200 FRONT CHASSIS PANEL<br/>CONNECTOR J09<br/>ANALOG INPUT 08</b> |               |                 |
|---|---------------|-----------------|
| <b>PIN</b>  | <b>SIGNAL</b> | <b>FUNCTION</b> |
| 01  | 4INPA08       | Analog input 08 |
| 02  | GND           | Ground          |

| <b>TABLE 2-11.<br/>MODEL 5200 FRONT CHASSIS PANEL<br/>CONNECTOR J10<br/>ANALOG INPUT 09</b> |               |                 |
|---|---------------|-----------------|
| <b>PIN</b>  | <b>SIGNAL</b> | <b>FUNCTION</b> |
| 01  | 4INPA09       | Analog input 09 |
| 02  | GND           | Ground          |

| <b>TABLE 2-12.<br/>MODEL 5200 FRONT CHASSIS PANEL CONNECTOR<br/>J11<br/>ANALOG INPUT 10</b> |               |                 |
|---|---------------|-----------------|
| <b>PIN</b>  | <b>SIGNAL</b> | <b>FUNCTION</b> |
| 01  | 4INPA10       | Analog input 10 |
| 02  | GND           | Ground          |

| <b>TABLE 2-13.<br/>MODEL 5200 FRONT CHASSIS PANEL CONNECTOR<br/>J12<br/>ANALOG INPUT 01</b> |               |                 |
|---|---------------|-----------------|
| <b>PIN</b>  | <b>SIGNAL</b> | <b>FUNCTION</b> |
| 01  | 4INPA11       | Analog input 11 |
| 02  | GND           | Ground          |

| <b>TABLE 2-14.<br/>MODEL 5200 FRONT CHASSIS PANEL CONNECTOR<br/>J13<br/>ANALOG INPUT 12</b> |               |                 |
|---|---------------|-----------------|
| <b>PIN</b>  | <b>SIGNAL</b> | <b>FUNCTION</b> |
| 01  | 4INPA12       | Analog input 12 |
| 02  | GND           | Ground          |

| <b>TABLE 2-15.<br/>MODEL 5200 FRONT CHASSIS PANEL CONNECTOR<br/>J14<br/>ANALOG INPUT 13</b> |               |                 |
|---|---------------|-----------------|
| <b>PIN</b>  | <b>SIGNAL</b> | <b>FUNCTION</b> |
| 01  | 4INPA13       | Analog input 13 |
| 02  | GND           | Ground          |

| <b>TABLE 2-16.<br/>MODEL 5200 FRONT CHASSIS PANEL CONNECTOR<br/>J15<br/>ANALOG INPUT 14</b> |               |                 |
|---|---------------|-----------------|
| <b>PIN</b>  | <b>SIGNAL</b> | <b>FUNCTION</b> |
| 01  | 4INPA14       | Analog input 14 |
| 02  | GND           | Ground          |

| <b>TABLE 2-17.<br/>MODEL 5200 FRONT CHASSIS PANEL CONNECTOR<br/>J16<br/>ANALOG INPUT 15</b> |               |                 |
|---|---------------|-----------------|
| <b>PIN</b>  | <b>SIGNAL</b> | <b>FUNCTION</b> |
| 01  | 4INPA15       | Analog input 15 |
| 02  | GND           | Ground          |

| <b>TABLE 2-18.</b>                              |               |                 |
|---|---------------|-----------------|
| <b>MODEL 5200 FRONT CHASSIS PANEL CONNECTOR</b> |               |                 |
| <b>J17</b>                                      |               |                 |
| <b>DTOA OUTPUT 00</b>                           |               |                 |
| <b>PIN</b>                                      | <b>SIGNAL</b> | <b>FUNCTION</b> |
| 01  | 4DCOT00       | DAC output 00   |
| 02  | GND           | Ground          |

| <b>TABLE 2-19.</b>                              |               |                 |
|---|---------------|-----------------|
| <b>MODEL 5200 FRONT CHASSIS PANEL CONNECTOR</b> |               |                 |
| <b>J18</b>                                      |               |                 |
| <b>DTOA OUTPUT 01</b>                           |               |                 |
| <b>PIN</b>                                      | <b>SIGNAL</b> | <b>FUNCTION</b> |
| 01  | 4DCOT01       | DAC output 01   |
| 02  | GND           | Ground          |

| <b>TABLE 2-20.</b>                              |               |                 |
|---|---------------|-----------------|
| <b>MODEL 5200 FRONT CHASSIS PANEL CONNECTOR</b> |               |                 |
| <b>J19</b>                                      |               |                 |
| <b>DTOA OUTPUT 02</b>                           |               |                 |
| <b>PIN</b>                                      | <b>SIGNAL</b> | <b>FUNCTION</b> |
| 01  | 4DCOT02       | DAC output 02   |
| 02  | GND           | Ground          |

| <b>TABLE 2-21.</b>                              |               |                 |
|---|---------------|-----------------|
| <b>MODEL 5200 FRONT CHASSIS PANEL CONNECTOR</b> |               |                 |
| <b>J20</b>                                      |               |                 |
| <b>DTOA OUTPUT 03</b>                           |               |                 |
| <b>PIN</b>                                      | <b>SIGNAL</b> | <b>FUNCTION</b> |
| 01  | 4DCOT03       | DAC output 03   |
| 02  | GND           | Ground          |

| <b>TABLE 2-22.</b>                              |               |                 |
|---|---------------|-----------------|
| <b>MODEL 5200 FRONT CHASSIS PANEL CONNECTOR</b> |               |                 |
| <b>J21</b>                                      |               |                 |
| <b>DTOA OUTPUT 04</b>                           |               |                 |
| <b>PIN</b>                                      | <b>SIGNAL</b> | <b>FUNCTION</b> |
| 01  | 4DCOT04       | DAC output 04   |
| 02  | GND           | Ground          |

| <b>TABLE 2-23.</b>                              |               |                 |
|---|---------------|-----------------|
| <b>MODEL 5200 FRONT CHASSIS PANEL CONNECTOR</b> |               |                 |
| <b>J22</b>                                      |               |                 |
| <b>DTOA OUTPUT 05</b>                           |               |                 |
| <b>PIN</b>                                      | <b>SIGNAL</b> | <b>FUNCTION</b> |
| 01  | 4DCOT05       | DAC output 05   |
| 02  | GND           | Ground          |

| <b>TABLE 2-24.</b>                              |               |                 |
|---|---------------|-----------------|
| <b>MODEL 5200 FRONT CHASSIS PANEL CONNECTOR</b> |               |                 |
| <b>J23</b>                                      |               |                 |
| <b>DTOA OUTPUT 06</b>                           |               |                 |
| <b>PIN</b>                                      | <b>SIGNAL</b> | <b>FUNCTION</b> |
| 01  | 4DCOT06       | DAC output 06   |
| 02  | GND           | Ground          |

| <b>TABLE 2-25.</b>                              |               |                 |
|---|---------------|-----------------|
| <b>MODEL 5200 FRONT CHASSIS PANEL CONNECTOR</b> |               |                 |
| <b>J24</b>                                      |               |                 |
| <b>DTOA OUTPUT 07</b>                           |               |                 |
| <b>PIN</b>                                      | <b>SIGNAL</b> | <b>FUNCTION</b> |
| 01  | 4DCOT07       | DAC output 07   |
| 02  | GND           | Ground          |

| <b>TABLE 2-26.</b>                              |               |                 |
|---|---------------|-----------------|
| <b>MODEL 5200 FRONT CHASSIS PANEL CONNECTOR</b> |               |                 |
| <b>J25</b>                                      |               |                 |
| <b>DTOA OUTPUT 08</b>                           |               |                 |
| <b>PIN</b>                                      | <b>SIGNAL</b> | <b>FUNCTION</b> |
| 01  | 4DCOT08       | DAC output 08   |
| 02  | GND           | Ground          |

| <b>TABLE 2-27.</b>                              |               |                 |
|---|---------------|-----------------|
| <b>MODEL 5200 FRONT CHASSIS PANEL CONNECTOR</b> |               |                 |
| <b>J26</b>                                      |               |                 |
| <b>DTOA OUTPUT 09</b>                           |               |                 |
| <b>PIN</b>                                      | <b>SIGNAL</b> | <b>FUNCTION</b> |
| 01  | 4DCOT09       | DAC output 09   |
| 02  | GND           | Ground          |

| <b>TABLE 2-28.</b>                              |               |                 |
|---|---------------|-----------------|
| <b>MODEL 5200 FRONT CHASSIS PANEL CONNECTOR</b> |               |                 |
| <b>J27</b>                                      |               |                 |
| <b>DTOA OUTPUT 10</b>                           |               |                 |
| <b>PIN</b>                                      | <b>SIGNAL</b> | <b>FUNCTION</b> |
| 01  | 4DCOT10       | DAC output 10   |
| 02  | GND           | Ground          |

| <b>TABLE 2-29.</b>                              |               |                 |
|---|---------------|-----------------|
| <b>MODEL 5200 FRONT CHASSIS PANEL CONNECTOR</b> |               |                 |
| <b>J28</b>                                      |               |                 |
| <b>DTOA OUTPUT 11</b>                           |               |                 |
| <b>PIN</b>                                      | <b>SIGNAL</b> | <b>FUNCTION</b> |
| 01  | 4DCOT11       | DAC output 11   |
| 02  | GND           | Ground          |

| <b>TABLE 2-30.</b>                              |               |                 |
|---|---------------|-----------------|
| <b>MODEL 5200 FRONT CHASSIS PANEL CONNECTOR</b> |               |                 |
| <b>J29</b>                                      |               |                 |
| <b>DTOA OUTPUT 12</b>                           |               |                 |
| <b>PIN</b>                                      | <b>SIGNAL</b> | <b>FUNCTION</b> |
| 01  | 4DCOT12       | DAC output 12   |
| 02  | GND           | Ground          |

| <b>TABLE 2-31.</b>                              |               |                 |
|---|---------------|-----------------|
| <b>MODEL 5200 FRONT CHASSIS PANEL CONNECTOR</b> |               |                 |
| <b>J30</b>                                      |               |                 |
| <b>DTOA OUTPUT 13</b>                           |               |                 |
| <b>PIN</b>                                      | <b>SIGNAL</b> | <b>FUNCTION</b> |
| 01  | 4DCOT13       | DAC output 13   |
| 02  | GND           | Ground          |

| <b>TABLE 2-32.</b>                              |               |                 |
|---|---------------|-----------------|
| <b>MODEL 5200 FRONT CHASSIS PANEL CONNECTOR</b> |               |                 |
| <b>J31</b>                                      |               |                 |
| <b>DTOA OUTPUT 14</b>                           |               |                 |
| <b>PIN</b>                                      | <b>SIGNAL</b> | <b>FUNCTION</b> |
| 01  | 4DCOT14       | DAC output 14   |
| 02  | GND           | Ground          |

| <b>TABLE 2-33.</b>                              |               |                 |
|---|---------------|-----------------|
| <b>MODEL 5200 FRONT CHASSIS PANEL CONNECTOR</b> |               |                 |
| <b>J32</b>                                      |               |                 |
| <b>DTOA OUTPUT 15</b>                           |               |                 |
| <b>PIN</b>                                      | <b>SIGNAL</b> | <b>FUNCTION</b> |
| 01  | 4DCOT15       | DAC output 15   |
| 02  | GND           | Ground          |

| <b>TABLE 2-34.</b>                              |               |                 |
|---|---------------|-----------------|
| <b>MODEL 5200 FRONT CHASSIS PANEL CONNECTOR</b> |               |                 |
| <b>J33</b>                                      |               |                 |
| <b>DTOA OUTPUT 16</b>                           |               |                 |
| <b>PIN</b>                                      | <b>SIGNAL</b> | <b>FUNCTION</b> |
| 01  | 4DCOT16       | DAC output 16   |
| 02  | GND           | Ground          |

| <b>TABLE 2-35.</b>                              |               |                 |
|---|---------------|-----------------|
| <b>MODEL 5200 FRONT CHASSIS PANEL CONNECTOR</b> |               |                 |
| <b>J34</b>                                      |               |                 |
| <b>DTOA OUTPUT 17</b>                           |               |                 |
| <b>PIN</b>                                      | <b>SIGNAL</b> | <b>FUNCTION</b> |
| 01  | 4DCOT17       | DAC output 17   |
| 02  | GND           | Ground          |

| <b>TABLE 2-36.</b>                              |               |                 |
|---|---------------|-----------------|
| <b>MODEL 5200 FRONT CHASSIS PANEL CONNECTOR</b> |               |                 |
| <b>J35</b>                                      |               |                 |
| <b>DTOA OUTPUT 18</b>                           |               |                 |
| <b>PIN</b>                                      | <b>SIGNAL</b> | <b>FUNCTION</b> |
| 01  | 4DCOT18       | DAC output 18   |
| 02  | GND           | Ground          |

| <b>TABLE 2-37.</b>                              |               |                 |
|---|---------------|-----------------|
| <b>MODEL 5200 FRONT CHASSIS PANEL CONNECTOR</b> |               |                 |
| <b>J36</b>                                      |               |                 |
| <b>DTOA OUTPUT 19</b>                           |               |                 |
| <b>PIN</b>                                      | <b>SIGNAL</b> | <b>FUNCTION</b> |
| 01  | 4DCOT19       | DAC output 19   |
| 02  | GND           | Ground          |

| <b>TABLE 2-38.</b>                              |               |                 |
|---|---------------|-----------------|
| <b>MODEL 5200 FRONT CHASSIS PANEL CONNECTOR</b> |               |                 |
| <b>J37</b>                                      |               |                 |
| <b>DTOA OUTPUT 20</b>                           |               |                 |
| <b>PIN</b>                                      | <b>SIGNAL</b> | <b>FUNCTION</b> |
| 01  | 4DCOT20       | DAC output 20   |
| 02  | GND           | Ground          |

| <b>TABLE 2-39.</b>                              |               |                 |
|---|---------------|-----------------|
| <b>MODEL 5200 FRONT CHASSIS PANEL CONNECTOR</b> |               |                 |
| <b>J38</b>                                      |               |                 |
| <b>DTOA OUTPUT 21</b>                           |               |                 |
| <b>PIN</b>                                      | <b>SIGNAL</b> | <b>FUNCTION</b> |
| 01  | 4DCOT21       | DAC output 21   |
| 02  | GND           | Ground          |

| <b>TABLE 2-40.</b>                              |               |                 |
|---|---------------|-----------------|
| <b>MODEL 5200 FRONT CHASSIS PANEL CONNECTOR</b> |               |                 |
| <b>J39</b>                                      |               |                 |
| <b>DTOA OUTPUT 22</b>                           |               |                 |
| <b>PIN</b>                                      | <b>SIGNAL</b> | <b>FUNCTION</b> |
| 01  | 4DCOT22       | DAC output 22   |
| 02  | GND           | Ground          |

| <b>TABLE 2-41.</b>                              |               |                 |
|---|---------------|-----------------|
| <b>MODEL 5200 FRONT CHASSIS PANEL CONNECTOR</b> |               |                 |
| <b>J40</b>                                      |               |                 |
| <b>DTOA OUTPUT 23</b>                           |               |                 |
| <b>PIN</b>                                      | <b>SIGNAL</b> | <b>FUNCTION</b> |
| 01  | 4DCOT23       | DAC output 23   |
| 02  | GND           | Ground          |

| <b>TABLE 2-42.</b>                              |               |                 |
|---|---------------|-----------------|
| <b>MODEL 5200 FRONT CHASSIS PANEL CONNECTOR</b> |               |                 |
| <b>J41</b>                                      |               |                 |
| <b>DTOA OUTPUT 24</b>                           |               |                 |
| <b>PIN</b>                                      | <b>SIGNAL</b> | <b>FUNCTION</b> |
| 01  | 4DCOT24       | DAC output 24   |
| 02  | GND           | Ground          |

| <b>TABLE 2-43.</b>                              |               |                 |
|---|---------------|-----------------|
| <b>MODEL 5200 FRONT CHASSIS PANEL CONNECTOR</b> |               |                 |
| <b>J42</b>                                      |               |                 |
| <b>DTOA OUTPUT 25</b>                           |               |                 |
| <b>PIN</b>                                      | <b>SIGNAL</b> | <b>FUNCTION</b> |
| 01  | 4DCOT25       | DAC output 25   |
| 02  | GND           | Ground          |

| <b>TABLE 2-44.</b>                              |               |                 |
|---|---------------|-----------------|
| <b>MODEL 5200 FRONT CHASSIS PANEL CONNECTOR</b> |               |                 |
| <b>J43</b>                                      |               |                 |
| <b>DTOA OUTPUT 26</b>                           |               |                 |
| <b>PIN</b>                                      | <b>SIGNAL</b> | <b>FUNCTION</b> |
| 01  | 4DCOT26       | DAC output 26   |
| 02  | GND           | Ground          |

| <b>TABLE 2-45.</b>                              |               |                 |
|---|---------------|-----------------|
| <b>MODEL 5200 FRONT CHASSIS PANEL CONNECTOR</b> |               |                 |
| <b>J44</b>                                      |               |                 |
| <b>DTOA OUTPUT 27</b>                           |               |                 |
| <b>PIN</b>                                      | <b>SIGNAL</b> | <b>FUNCTION</b> |
| 01  | 4DCOT27       | DAC output 27   |
| 02  | GND           | Ground          |

| <b>TABLE 2-46.</b>                              |               |                 |
|---|---------------|-----------------|
| <b>MODEL 5200 FRONT CHASSIS PANEL CONNECTOR</b> |               |                 |
| <b>J45</b>                                      |               |                 |
| <b>DTOA OUTPUT 28</b>                           |               |                 |
| <b>PIN</b>                                      | <b>SIGNAL</b> | <b>FUNCTION</b> |
| 01  | 4DCOT28       | DAC output 28   |
| 02  | GND           | Ground          |

| <b>TABLE 2-47.</b>                              |               |                 |
|---|---------------|-----------------|
| <b>MODEL 5200 FRONT CHASSIS PANEL CONNECTOR</b> |               |                 |
| <b>J46</b>                                      |               |                 |
| <b>DTOA OUTPUT 29</b>                           |               |                 |
| <b>PIN</b>                                      | <b>SIGNAL</b> | <b>FUNCTION</b> |
| 01  | 4DCOT29       | DAC output 29   |
| 02  | GND           | Ground          |

| <b>TABLE 2-48.</b><br><b>MODEL 5200 FRONT CHASSIS PANEL CONNECTOR</b><br><b>J47</b><br><b>DTOA OUTPUT 30</b> |         |               |
|--|---------|---------------|
| PIN  | SIGNAL  | FUNCTION      |
| 01   | 4DCOT30 | DAC output 30 |
| 02   | GND     | Ground        |

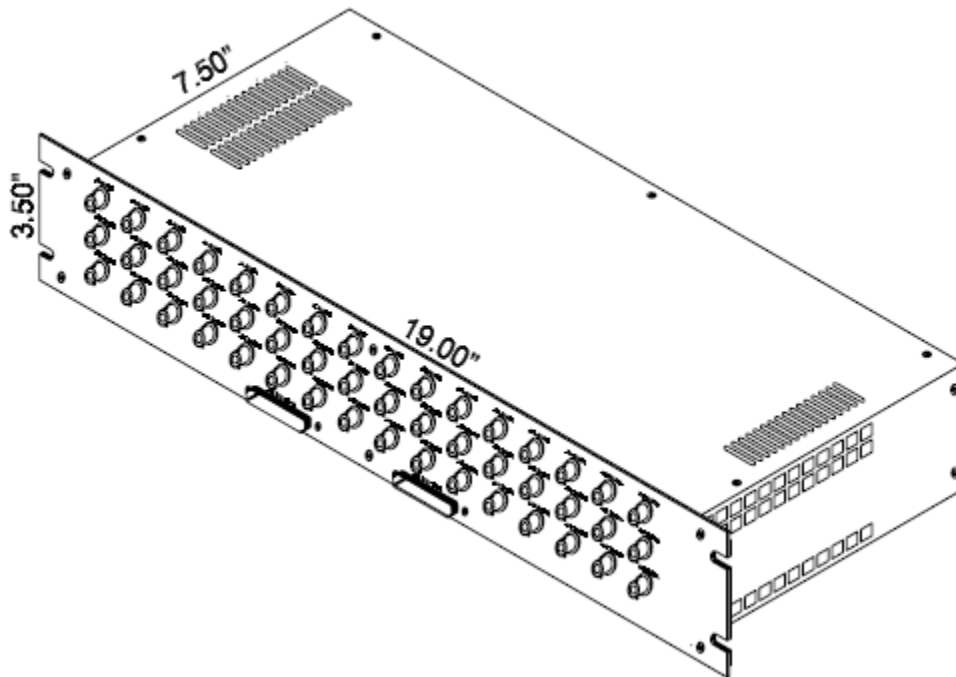
| <b>TABLE 2-49.</b><br><b>MODEL 5200 FRONT CHASSIS PANEL CONNECTOR</b><br><b>J48</b><br><b>DTOA OUTPUT 31</b> |         |               |
|--|---------|---------------|
| PIN  | SIGNAL  | FUNCTION      |
| 01   | 4DCOT31 | DAC output 31 |
| 02   | GND     | Ground        |

| <b>TABLE 2-50.</b><br><b>MODEL 5200 FRONT PANEL</b><br><b>CONNECTOR J49</b> |         |                    |
|---|---------|--------------------|
| PIN   | SIGNAL  | FUNCTION           |
| 13  | GND     | Ground             |
| 25  | 4LINE00 | Discrete Output 00 |
| 12  | 4LINE01 | Discrete Output 01 |
| 24  | 4LINE02 | Discrete Output 02 |
| 11  | 4LINE03 | Discrete Output 03 |
| 23  | 4LINE04 | Discrete Output 04 |
| 10  | 4LINE05 | Discrete Output 05 |
| 22  | 4LINE06 | Discrete Output 06 |
| 09  | 4LINE07 | Discrete Output 07 |
| 21  | GND     | Ground             |
| 08  | GND     | Ground             |
| 20  | 4LINE08 | Discrete Output 08 |
| 07  | 4LINE09 | Discrete Output 09 |
| 19  | 4LINE10 | Discrete Output 10 |
| 06  | 4LINE11 | Discrete Output 11 |
| 18  | 4LINE12 | Discrete Output 12 |
| 05  | 4LINE13 | Discrete Output 13 |
| 17  | 4LINE14 | Discrete Output 14 |
| 04  | 4LINE15 | Discrete Output 15 |
| 16  | GND     | Ground             |

|           |         |                |
|-----------|---------|----------------|
| <b>03</b> |         | No Connection  |
| <b>15</b> | 4DTRDY1 | DISC Data Rdy1 |
| <b>02</b> | GND     | Ground         |
| <b>14</b> | GND     | Ground         |
| <b>01</b> | 4DTACK1 | DISC Data Ack1 |

| <b>TABLE 2-51.<br/>MODEL 5200 FRONT PANEL<br/>CONNECTOR J50</b> |               |                    |
|---|---------------|--------------------|
| <b>PIN</b>  | <b>SIGNAL</b> | <b>FUNCTION</b>    |
| <b>13</b>   | GND           | Ground             |
| <b>25</b>   | 4LINE16       | Discrete Output 16 |
| <b>12</b>   | 4LINE17       | Discrete Output 17 |
| <b>24</b>   | 4LINE18       | Discrete Output 18 |
| <b>11</b>   | 4LINE19       | Discrete Output 19 |
| <b>23</b>   | 4LINE20       | Discrete Output 20 |
| <b>10</b>   | 4LINE21       | Discrete Output 21 |
| <b>22</b>   | 4LINE22       | Discrete Output 22 |
| <b>09</b>   | 4LINE23       | Discrete Output 23 |
| <b>21</b>   | GND           | Ground             |
| <b>08</b>   | GND           | Ground             |
| <b>20</b>   | 4LINE24       | Discrete Output 24 |
| <b>07</b>   | 4LINE25       | Discrete Output 25 |
| <b>19</b>   | 4LINE26       | Discrete Output 26 |
| <b>06</b>   | 4LINE27       | Discrete Output 27 |
| <b>18</b>   | 4LINE28       | Discrete Output 28 |
| <b>05</b>   | 4LINE29       | Discrete Output 29 |
| <b>17</b>   | 4LINE30       | Discrete Output 30 |
| <b>04</b>   | 4LINE31       | Discrete Output 31 |
| <b>16</b>   | GND           | Ground             |
| <b>03</b>   |               | No Connection      |
| <b>15</b>   | 4DTRDY2       | DISC Data Rdy2     |
| <b>02</b>   | GND           | Ground             |
| <b>14</b>   | GND           | Ground             |
| <b>01</b>   | 4DTACK2       | DISC Data Ack2     |

### Section 3 Drawings



Bill Of Materials 3300224 Revision A PCI DAC/ADC DISTRIBUTION UNIT

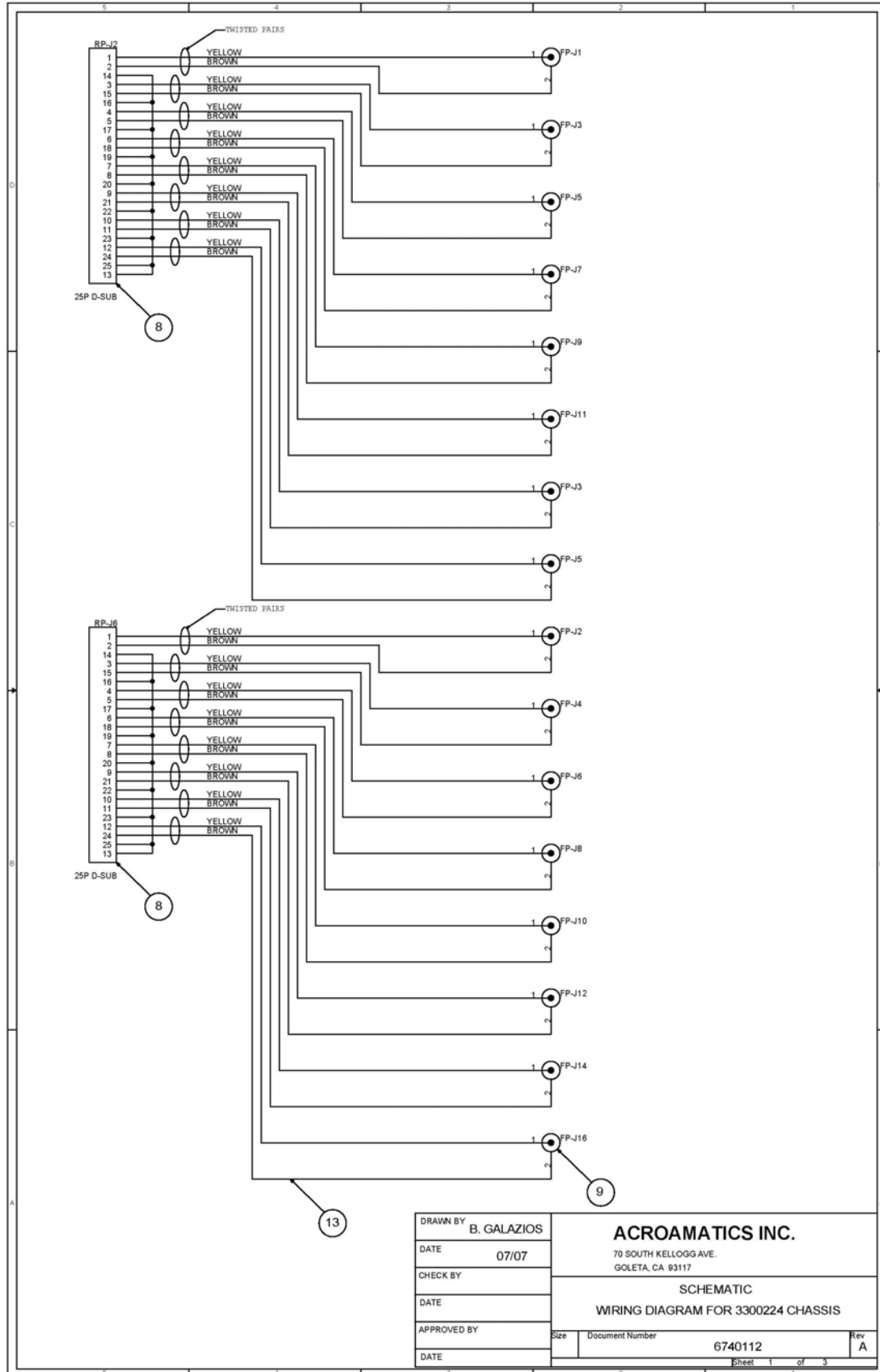


Page 1 of 1

Engineer Howard C. Last Used Type Standard

| No. | Component | Qty | U/M  | Description                     | Rev | Type | Manufacturer Part # | Manufacture | Reference                      |
|-----|-----------|-----|------|---------------------------------|-----|------|---------------------|-------------|--------------------------------|
| 1   | 3061059   | 1   | EACH | COVER TOP ROU CHASSIS           |     |      | 3061059             | ACROAMATICS |                                |
| 2   | 2240178   | 1   | EACH | CHASSIS 3.5" ROU                |     |      | 2240178             | ACROAMATICS |                                |
| 3   | 6730176   | 1   | EACH | FP PNL-DAC/ADC DIST UNIT        |     |      | 6730176             | ACROAMATICS | SCRN# 8071266                  |
| 4   | 6011487   | 1   | EACH | FRONT PANEL DISTRIBUTION BOARD  | *   | STD  | 6011487             | ACROAMATICS |                                |
| 5   | 6011487   | 1   | EACH | FRONT PANEL DISTRIBUTION BOARD  | *   |      | 6011487             | ACROAMATICS |                                |
| 6   | 2240201   | 1   | EACH | CHASSIS RP DAC/ADC DIST UNIT    | *   |      | 2240201             | ACROAMATICS | SCREEN # 8071267               |
| 7   | 7490020   | 2   | EACH | CONN D-SUB 25P MAL WSLD-C-UP    | *   |      | DB-25P/125M-ND      | TRW/CINCH   | FP TO RP J2, J6                |
| 8   | 2794225   | 49  | EACH | CONN BNC INSUL AT F-NAUT SOLDER | *   |      | 31-10               | AMPHENOL    | FP J1, J48                     |
| 9   | 7490021   | 2   | EACH | CONN D-SUB 25S FEM WSLD CUP     | *   |      | DB-25S/125F-ND      | TRW/CINCH   | FP J49, J50                    |
| 10  | 7490005   | 4   | EACH | CONN CBL 3/P D-SUB (RIBBON)     | *   |      | 8237-6000           | 3M          | FP J3, J4, 7, 8 TO FP J17, J50 |
| 11  | 7490005   | 4   | EACH | CONN CBL 3/P D-SUB (RIBBON)     | *   |      | 8237-6000           | 3M          |                                |
| 12  | 9890100   |     | NICH | WIRE TWISTED PR YEL/BRN         | *   |      | BU1538-26-2C-41     | MIL-SPEC    |                                |
| 13  | 9890223   |     | NICH | WIRE 28 AWG 20 PAIR RBN T/F     | *   |      | 943-1322801-040     | SPECTRA-STR |                                |
| 14  | 6740112   | 1   | EACH | FP PNL LAYOUT DAC MN 5200       | *   |      | 6740112             | ACROAMATICS |                                |
| 15  | 8071266   | 1   | EACH | SILKSON-PP DAC/ADC DISTRIBUTIO  | *   |      | 6730176             | ACROAMATICS |                                |
| 16  | 8071267   | 1   | EACH | SILKSON-PP DAC/ADC DISTRIBUTIO  | *   |      | 2240201             | ACROAMATICS |                                |
| 17  | 8071267   | 1   | EACH | SILKSON-PP DAC/ADC DISTRIBUTIO  | *   |      | 2240201             | ACROAMATICS |                                |
| 18  | 8071267   | 1   | EACH | SILKSON-PP DAC/ADC DISTRIBUTIO  | *   |      | 2240201             | ACROAMATICS |                                |

Run Date 7/30/2007 6:23:00AM Page 1 of 1 Page 1



|             |             |  |                 |
|-------------|-------------|--|-----------------|
| DRAWN BY    | B. GALAZIOS | <b>ACROAMATICS INC.</b><br>70 SOUTH KELLOGG AVE.<br>GOLETA, CA 93117 |                 |
| DATE        | 07/07       |  |                 |
| CHECK BY    |             | SCHEMATIC<br>WIRING DIAGRAM FOR 3300224 CHASSIS                      |                 |
| DATE        |             |  |                 |
| APPROVED BY |             | Size   | Document Number |
| DATE        |             |  | 6740112         |
|             |             | Rev A  |                 |
|             |             | Sheet 1 of 3   |                 |

